



PRODUCTS CATALOG

ELECTRICAL ENCLOSURES & MODULAR CABINETS



20

exmweb.com

STANDARD STAINLESS STEEL PUSHBUTTON ENCLOSURES

The 1412 SDSS oil and dust tight pushbutton enclosures are built to provide protection against corrosion, dirt, dust and oil, for all brands of oil tight pushbuttons, switches and pilot lights. The 1412 SDSS are made of high quality 16 GA (type 304) stainless steel, with all seams continuously welded. A high quality, seamless gasket, which is poured in place, ensures a complete and durable

seal of the enclosure. Cover screws thread into sealed wells and are captive. The enclosure can be internally or externally mounted using the included die cast wall mounting feet. These feet have oblong holes to facilitate installation. Hole plugs (880 HP series) are available to seal unused holes. The 1412 SDSS is available with standard and miniature pushbutton holes.

The enclosures' exterior are unpainted and brushed smooth. The enclosures' interior is finished with white heat fused powder paint, electrostatically applied on a pre-treated base.

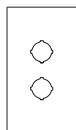
**CSA Certified / UL Listed
NEMA/EEMAC 4X / IP66**

Refer to p.734 to validate choice of substrate for the application

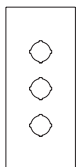
030302



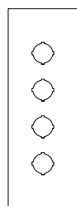
050302



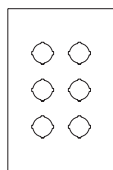
080302



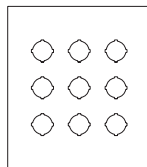
100302



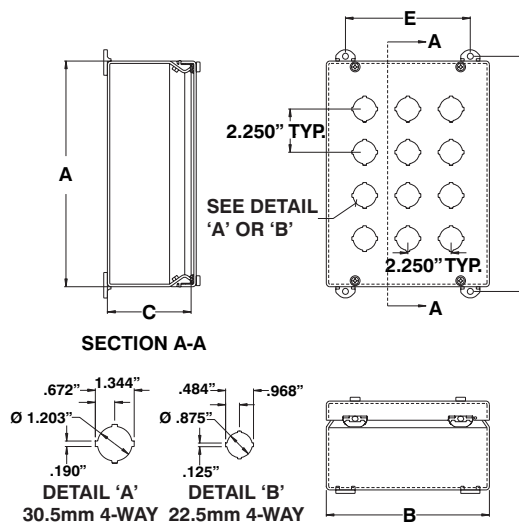
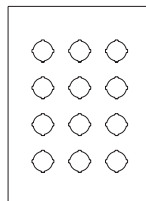
090603



090803



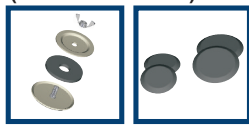
110803



CATALOG NUMBER	QTY. HOLES	DIMENSIONS					SHIP WGHT LBS.
		A	B	C	D	E	
1412 SDSS030302	1	4.000	3.500	3.000	4.500	2.375	1
1412 SDSS050302	2	6.250	3.500	3.000	6.750	2.375	2
1412 SDSS080302	3	8.500	3.500	3.000	9.000	2.375	3
1412 SDSS100302	4	10.750	3.500	3.000	11.250	2.375	4
1412 SDSS090603	6	10.000	6.500	3.000	10.500	5.375	5
1412 SDSS090803	9	10.000	8.750	3.000	10.500	7.625	7
1412 SDSS110803	12	12.250	8.750	3.000	12.750	7.625	8

Notes :

- For stainless steel Type 316, add suffix '6' to the catalog number (i.e. 1412 SDSS0303026).
- Enclosures are also available with welded mounting feet, add suffix 'MF' to the catalog number (i.e. 1412 SDSS070603MF).
- Enclosures are also available with 22.5mm pushbutton holes, add suffix 'MN' to the catalog number (i.e. 1412 SD030302MN).
- For painted stainless steel, add suffix 'P' to the catalog number (i.e. 1412 SDSS...P).



p.534

p.534

